

2023
CHRYSLER
300



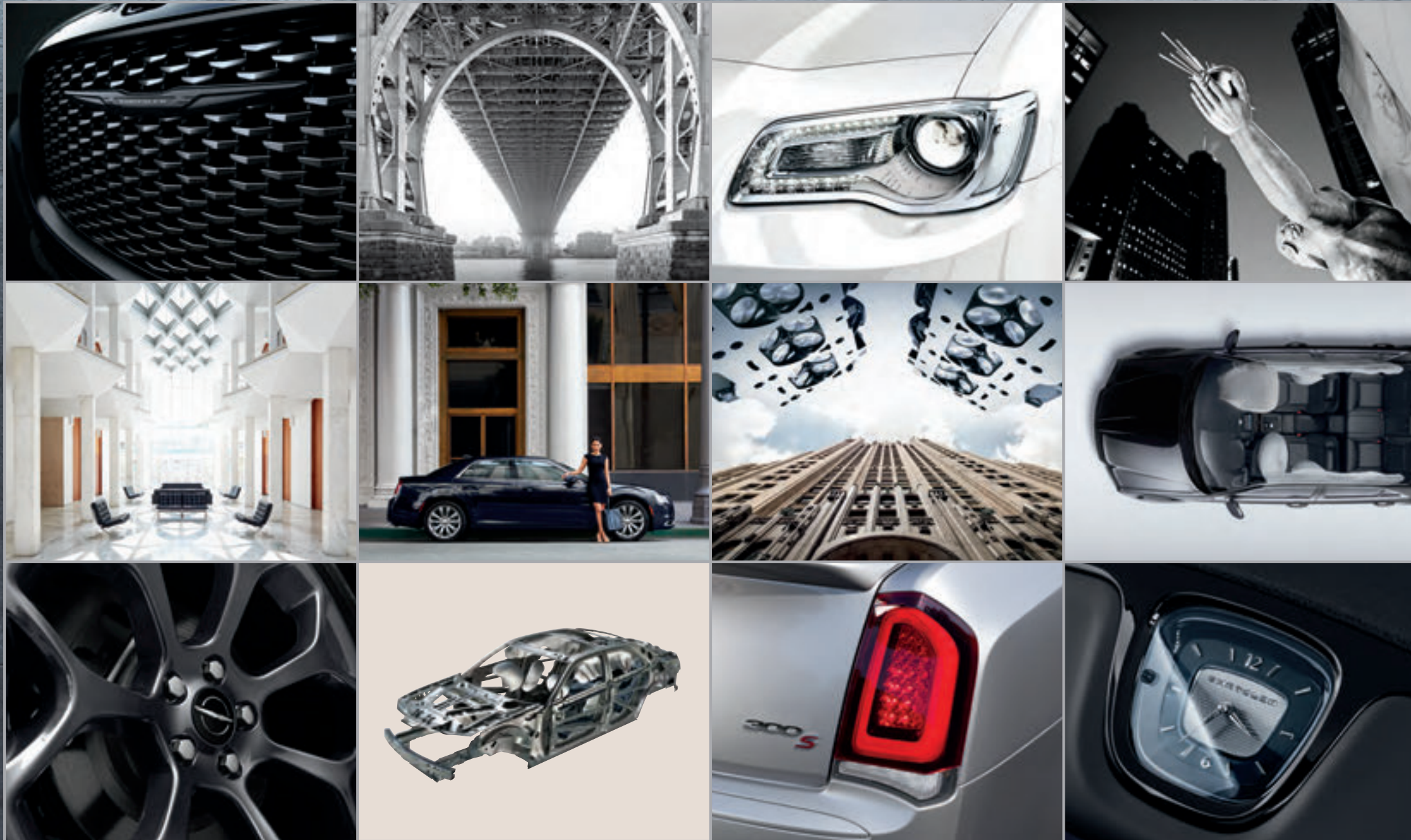
UNDAUNTED

An engineering feat of combustion, compression and horsepower performance combined with its refined chassis and driveline give the Chrysler 300 that renowned ultrasmooth ride-and-handling feeling.

This commanding, full-size sedan stands for the best of American inspiration, delivering on the promise of elegant design with the world-class power and performance of the V6 or available V8 engine. Big, bold, statement-making design elements are the hallmark of the shape defined by sculpted, athletic curves.



300S V8 shown in Bright White







A PIERCING GAZE

A small, round, brilliant-cut diamond gemstone is positioned to the right of the word "GAZE" in the section header.

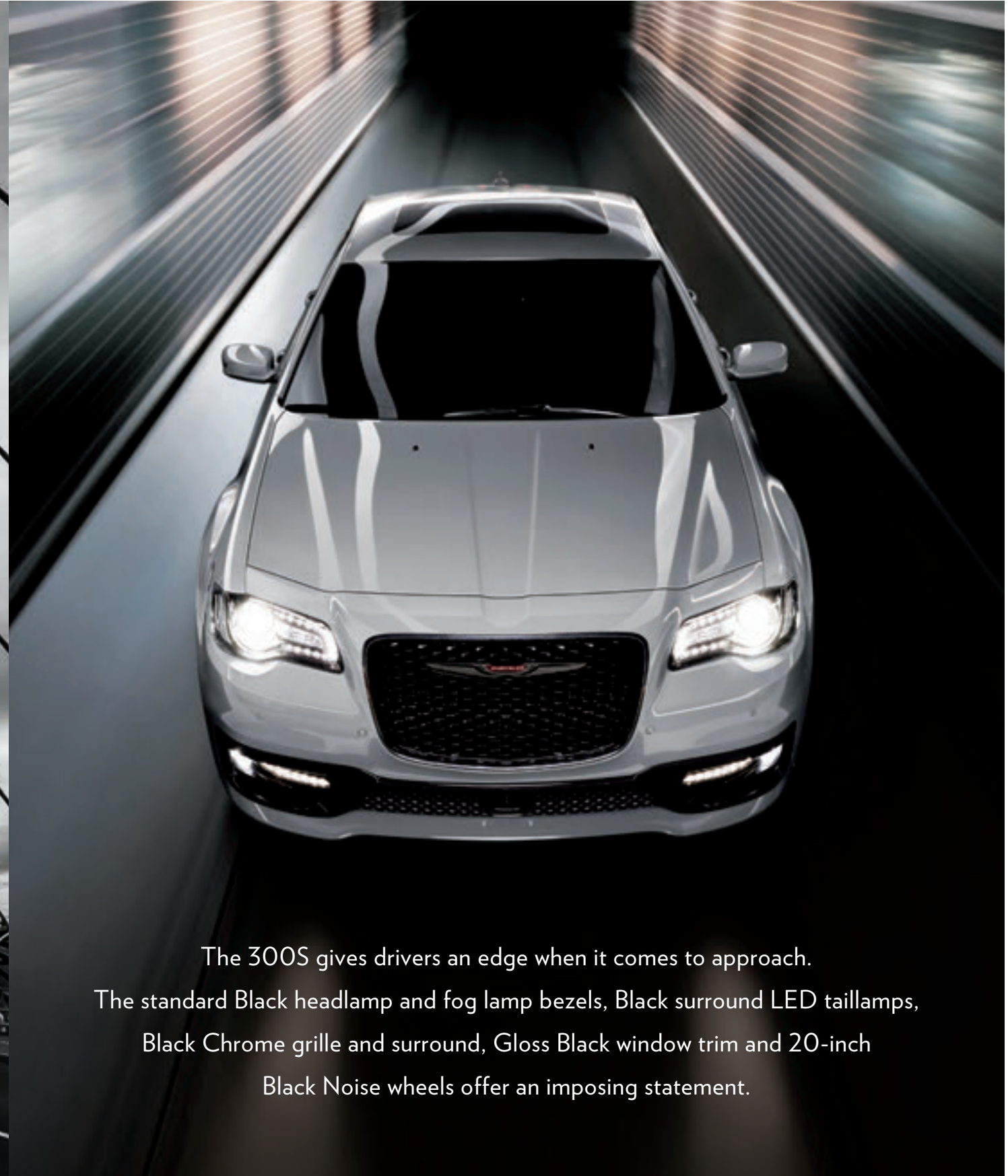
In keeping with its vow of distinctive elegance, jeweled LED headlamps illuminate your star power. The available adaptive High Intensity Discharge (HID) headlamps and Automatic High-Beam Headlamp Control adjust to optimize the driver's view of the road ahead.

WELL-POSITIONED

The premium-wrapped and available heated steering wheel provides an advanced ergonomic grip, cruise control and hands-free^{1*} phone controls. On 300S, you'll enjoy standard performance-driving Sport mode paddle shifters. You'll find just the right position with the steering wheel's tilt and telescoping column, as well as the at-a-glance convenience of the 7-inch Driver Information Display gauges. This instrument system allows you to select useful information for audio features, fuel economy, cruise control, speed, tire pressure and more via steering wheel-mounted buttons.



*A note about this catalog: all disclosures can be found on the last page.



The 300S gives drivers an edge when it comes to approach. The standard Black headlamp and fog lamp bezels, Black surround LED taillamps, Black Chrome grille and surround, Gloss Black window trim and 20-inch Black Noise wheels offer an imposing statement.



CUE THE SPORT EFFECTS

- + Standard Sport mode with steering wheel-mounted paddle shifters
- + Performance-driving capabilities with full manual shifting via paddle shifters or let the automatic transmission shift normally without driver input
- + Fast gear response during acceleration with smooth power delivery and transitions
- + Leather-trimmed seats with embroidered "S" logo

GREAT STRIDES

The standard 3.6L Pentastar® V6 yields a manufacturer's-projected rating of up to 30 mpg highway² while kicking out a robust 292 horsepower and 260 lb-ft of torque. Additionally, thanks in part to the power-inducing dual-exhaust system, V6-equipped 300S models are able to achieve up to 300 horsepower and 264 lb-ft of torque.





The legendary 5.7L HEMI® V8 engine, available on 300S, delivers 363 horsepower, 394 lb-ft of torque and 0 – 60 mph in less than six seconds. Fuel Saver Technology engineered into the V8 engine automatically detects when full power isn't needed, such as when highway cruising, and deactivates four of the eight cylinders to help maximize fuel efficiency.

300C

*EXTRA, IN A VERY
GOOD WAY*



300C raises both eyebrows and pulses, starting with its 485-horsepower 6.4L HEMI® V8 engine. 20-inch cast aluminum, fully painted, Lights Out wheels with performance tires, Red four-piston Brembo® brakes, 3.09 limited-slip differential and an active damping suspension all help rein things in. Distinctive accents, like the new tricolor 300C grille badge, Black 300C decklid badge, Black Chrome accents, Black headlamp/taillamp bezels and Black exhaust tips, tell its performance story. Choose from classic, racetrack-inspired colors: Bright White, Gloss Black or Velvet Red Pearl Coat.



LIVING LARGE, 300C STYLE With 300C, you're encouraged to settle in with its Black Laguna leather-trimmed seats detailed with 300C embossment and Silver stitching, heated and ventilated front seats, and a heated steering wheel. A glance around reveals the leather instrument panel and door trim with Silver stitching, along with Carbon Fiber and Piano Black bezels. Audiophiles will revel in the 19-speaker Premium Harman Kardon® GreenEdge™ Audio System, and everyone will appreciate the available Driver Convenience Group featuring Advanced Brake Assist,² LaneSense® Lane Departure Warning with Lane Keep Assist⁴ and Full-Speed Forward Collision Warning with Active Braking.³

A black Chrysler 300 is shown driving on a snowy city street. The car is in the foreground, moving towards the left. The background features historic buildings with ornate facades and snow-covered roofs. The overall scene is a winter city street.

STREETWISE ALL-WHEEL DRIVE

The Chrysler 300 offers class-exclusive, available All-Wheel Drive (AWD) with the front-axle disconnect system.⁵ It is designed to detect wheel-slip and kicks in before you even realize you need it by automatically distributing power between front and rear wheels. The system also engages when the driver turns off the Electronic Stability Control (ESC)⁶ system. In cases of inclement weather, AWD is tuned to help minimize oversteer and maximize traction where snow, ice, mud, sand or gravel is present.



LUXURY AT THE READY

The available Remote Start System⁷ allows the driver's available heated seat and the heated steering wheel to automatically activate based on outdoor temperature. Driver conveniences, like standard remote proximity keyless entry and push-button start, allow for key fob-free hands. Additional available conveniences offered include auto-adjust-in-Reverse driver's mirrors and memory settings for driver's seat, power tilt and telescoping steering column, exterior mirrors and radio, as well as a trunk mat and door sill scuff pads for an added layer of interior protection.



Present yourself in the best light with an available dual-pane panoramic sunroof that extends to the backseat, while the available power backlight sunshade blocks any unwanted direct sunlight from behind. You'll also enjoy the cabin quietness of the sound-dampening acoustic glass on the windshield and front doors, as well as the Solar-Control front and rear windows, designed to help reduce heat and glare.

ADVANCED AIR FILTRATION IS OUR STANDARD

Our advanced air filtration system provides a high standard of clean air for you and your family. The Chrysler Air Filtration System filters 95 percent of air particulates, reducing many types of solid and liquid airborne matter, such as dust, smoke, droplets and aerosols.



300S V8 interior shown in Black Nappa leather trim

SWEET SERENITY

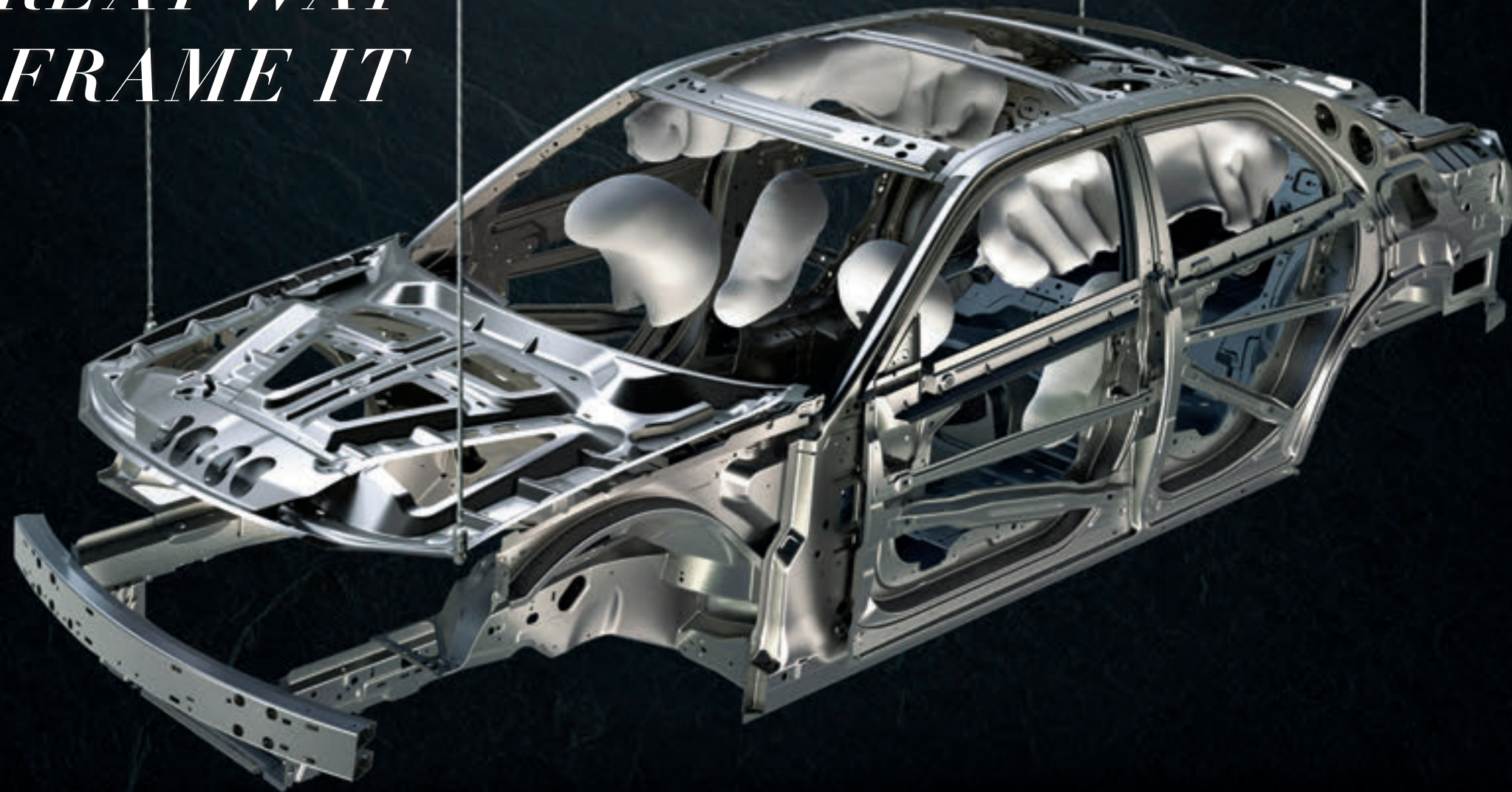
Thanks to the available, premium and supple Nappa leather trim, detailed stitching and well-thought-out finishing accents, this is a level of comfort that normally qualifies for pre-boarding. Standard perks include the largest-in-class Uconnect® 8.4-inch touchscreen system⁸ to display music, Integrated Voice Command with streaming audio, climate controls and vehicle information, Apple CarPlay,⁹ Android Auto^{TM10} and SiriusXM® Radio that includes a six-month trial.¹¹

The image shows the interior of a car, specifically the front and rear seats. The seats are upholstered in a light-colored, possibly white or cream, leather with a subtle pattern. The front seats have a high backrest and a headrest. The rear seat is a bench seat with three individual seatbacks. The dashboard and steering wheel are dark, likely black or dark grey. The overall lighting is soft and focused on the seats, highlighting their texture and contours. The text "ELEVATED ELBOW ROOM" is overlaid on the right side of the image in a large, white, serif font.

ELEVATED ELBOW ROOM

BEST-IN-CLASS INTERIOR SPACE⁵ The roomy and functional Chrysler 300 interior makes for a ride that's both luxurious and passenger-friendly with best-in-class passenger volume⁵ and seating for five. You'll enjoy comfort in any climate, thanks to the available heated and ventilated leather-trimmed front seats and heated steering wheel. Rear-seat occupants will enjoy amenities like climate control outlets, available heated seats and rear-storage armrest with LED-illuminated cup holders, as well as access to USB ports.

A GREAT WAY TO FRAME IT

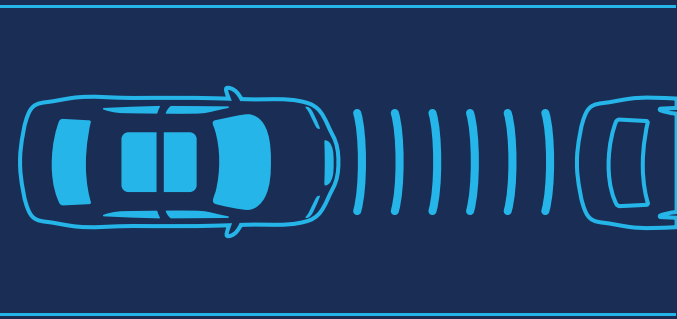


SAFETY CAGE The body frame strategically mixes and positions high-strength steels, providing advanced occupant protection in the event of a front, side or rear impact.

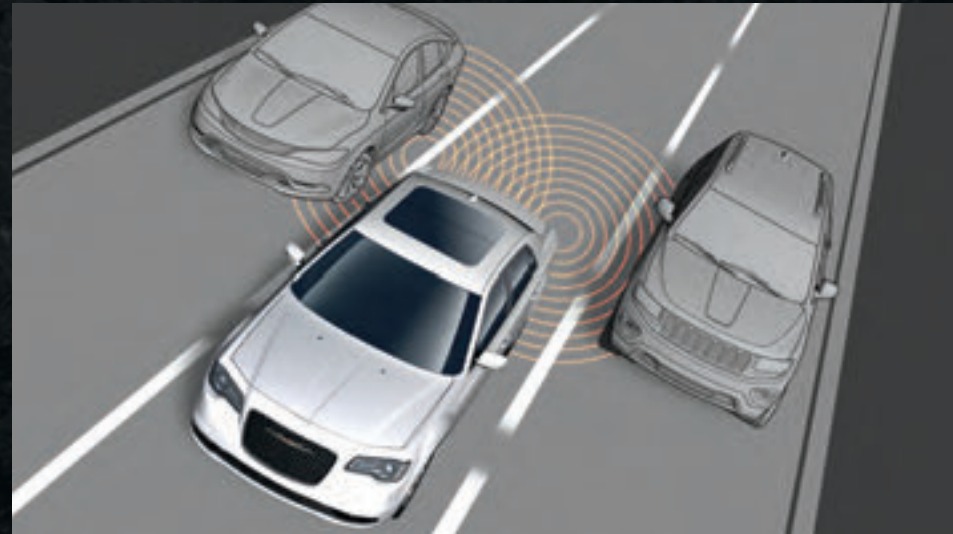
SIDE-GUARD DOOR BEAMS Reinforcement beams inside the doors help provide occupant protection in side collisions.

CRUMPLE ZONES The front and rear crumple zones are specially formed structures that crumple and absorb energy in a collision, helping to protect the cabin occupants.

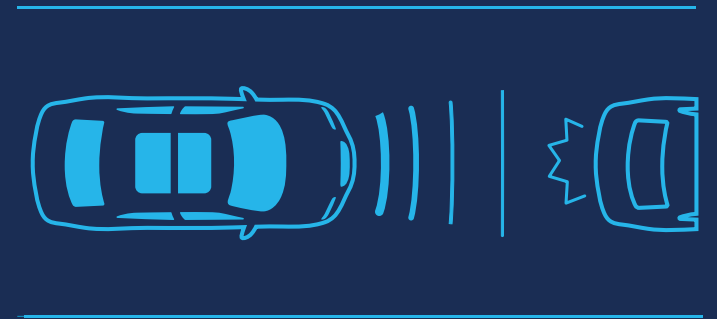
AVAILABLE ADAPTIVE CRUISE CONTROL WITH STOP¹²



AVAILABLE BLIND SPOT MONITORING¹³



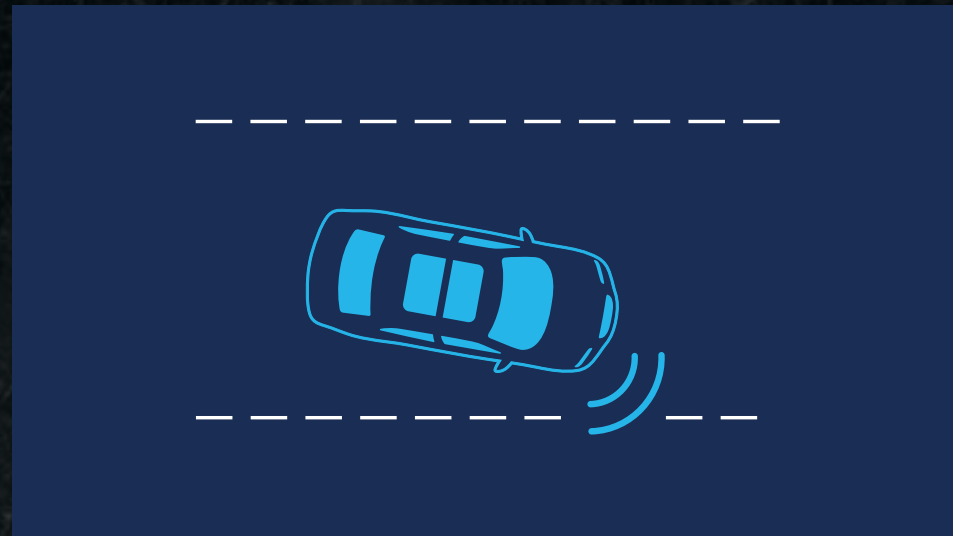
AVAILABLE FULL-SPEED FORWARD COLLISION WARNING WITH ACTIVE BRAKING³



ADVANCED PROTECTION OFFERED WITH 80+ STANDARD AND AVAILABLE SAFETY AND SECURITY FEATURES



AVAILABLE REAR CROSS-PATH DETECTION¹⁴



AVAILABLE LANESENSE[®]
LANE DEPARTURE WARNING WITH LANE KEEP ASSIST⁴



AVAILABLE PARKSENSE[®]
FRONT AND REAR PARK ASSIST SYSTEM¹⁵



AIR BAGS¹⁶



GOOD SURROUNDINGS

Seven standard air bags¹⁶

The standard air bags¹⁶ include front multistage air bags¹⁶ with adaptive venting technology, a driver's-side inflatable knee bolster,¹⁶ as well as front-seat-mounted side-impact air bags.¹⁶ The side air bag¹⁶ inflatable curtains extend over front- and rear-seat rows.

Advanced multistage front air bags¹⁶

Advanced multistage front air bags¹⁶ sense impact severity and size of occupant to inflate with different levels of force for added security.



VISIT DRIVEUCONNECT.COM
FOR A FULL RANGE OF INTERACTIVE FEATURES
FOR YOUR VEHICLE AND BEYOND

The ultimate convenience comes from technology that makes every day easier — and getting where you need to go as simple as just asking.

Count on standard Apple CarPlay^{®9} and Android Auto^{™10} compatibility, as well as a host of available features like hands-free¹ talk and text, 4G Wi-Fi Hotspot,¹⁷ one-step navigation, and roadside assistance¹⁸ — all bringing seamless connectivity to your drive. Plus, SiriusXM Guardian^{™19} Connected Services allow you to control certain features from virtually anywhere via the Chrysler smartphone app, including the Remote Vehicle Start System,²⁰ safety alerts and much more in your one-year trial subscription. Plus, Chrysler Skill for Alexa²¹ makes it possible to communicate with your Chrysler 300 right from the comfort of your home.



Uconnect[®] + **SiriusXM**
GUARDIAN[™]



300 TOURING

300 Touring: Select standard equipment

Powertrain

292-hp 3.6L Pentastar® Variable Valve Timing (VVT) V6 with 8-speed automatic transmission and Rear-Wheel Drive (RWD)

Optional All-Wheel Drive (AWD)
4-wheel independent Touring suspension
4-wheel independent AWD suspension (AWD)

Exterior

17-inch cast aluminum wheel, painted Fine Silver (RWD)
19-inch cast aluminum wheel, fully polished (AWD)
Acoustic windshield and front-door glass
Body-color mirror caps and door handles
Automatic halogen projector headlamps with Chrome bezels
LED daytime running lamps (DRLs)
Chrome LED taillamps
Bright Chrome surround with Black grille
Dual exhaust with bright tips
Power, heated mirrors
Sport Appearance Package

Interior

Chrysler Air Filtration System
Cloth seats
Power driver's seat with 4-way power lumbar adjust
60/40 split-folding rear bench seat
Tilt/telescoping steering column
Premium-wrapped steering wheel
Uconnect® 4C with 8.4-inch touchscreen display
6 speakers
Integrated Voice Command with streaming audio
SiriusXM® Radio 6-month trial services¹¹
SiriusXM Guardian™¹⁹ 1-year trial services
Media Hub (2 USB ports²² and auxiliary input)
Rotary E-shifter
Remote proximity keyless entry with push-button start
Dual-Zone Automatic Temperature Control (ATC)
Speed control
ParkView® Rear Back-Up Camera¹⁴
Security alarm²³



300 TOURING L

300 Touring L: Select standard equipment over 300 Touring

Exterior

20-inch cast aluminum wheel, fully painted Black Noise (RWD)
19-inch cast aluminum wheel, fully painted Black Noise (AWD)
Premium fog lamps
Power, heated mirrors with courtesy lamps, supplemental turn signals and auto-dimming on driver's side
Headlamps with Black bezels
Black LED taillamps
Black Chrome surround with Gloss Black grille
Gloss Black daylight opening (DLO) surround moldings
Blind Spot Monitoring¹³ and Rear Cross-Path Detection¹⁴
Body-color performance front fascia with premium LED fog lamps
Chrysler wing badge with Black accents

Interior

Nappa leather-trimmed bucket seats
Power passenger seat with 4-way power lumbar adjust
Heated front seats
Remote Start System⁷
Universal Garage Door Opener²⁴
ParkSense® Front and Rear Park Assist System¹⁵



300S

300S: Select standard equipment over 300 Touring L

Powertrain

300-hp 3.6L Pentastar VVT V6 with 8-speed automatic transmission
Optional 5.7L HEMI® V8 with 8-speed automatic transmission
Performance-tuned suspension
Sport mode

Exterior

Front LED fog lamps
Dual-pane panoramic sunroof
Chrysler wing badge with Red accents
S Model Appearance Package with 5.7L HEMI V8

Interior

Nappa leather-trimmed Sport bucket seats
Steering wheel-mounted paddle shifters
9 Premium Alpine® speakers with trunk-mounted subwoofer and 506-watt amplifier
Piano Black accents
Surround Sound system
Uconnect 4C NAV with 8.4-inch touchscreen display and navigation



300C

300C: Select standard equipment over 300S

Exterior

Three-Mode Electronic Stability Control (ESC)⁶ System
220-amp alternator
Antilock 4-wheel disc performance brakes
Red brake calipers
20-inch Lights Out-painted aluminum wheels
P245/45ZR20 All-Season performance tires
Antispin rear differential
3.09 rear axle ratio
Active dual exhaust with Black tips
Rain-sensing windshield wipers
Adaptive Bi-xenon High Intensity Discharge (HID) headlamps with automatic leveling system and Auto High-Beam Headlamp Control

Interior

Heated front seats
Ventilated front seats
Laguna leather-trimmed seats with 300C logo
Illuminated rear cup holders
Power 4-way driver's and passenger lumbar adjust
Heated second-row seats
Heated steering wheel
Power-adjustable pedals with memory system
Deluxe Security Alarm²³
Rearview auto-dimming mirror
Luxury front and rear floor mats
Silver interior accent stitching
Bright pedals
160-mph speedometer
Configurable performance pages
Performance shift indicator
Full-Speed Forward Collision Warning with Active Braking³
Adaptive Cruise Control with Stop¹²
LaneSense® Lane Departure Warning with Lane Keep Assist⁴
Performance-tuned steering
Active damping suspension
19-speaker Premium Harman Kardon® GreenEdge™ Audio System with 900-watt amplifier and Surround Sound system
Power tilt/telescoping steering column

EXTERIOR COLORS / WHEELS



Silver Mist



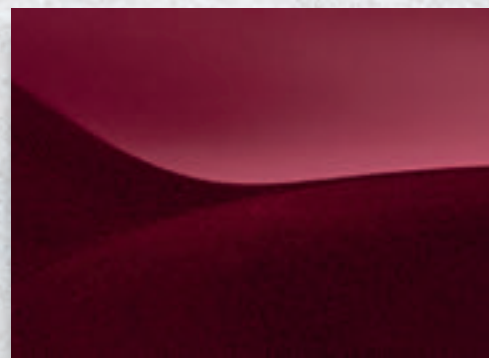
Frostbite²⁵



Bright White



Granite Crystal



Velvet Red Pearl Coat



Gloss Black



17-INCH CAST ALUMINUM WHEEL, PAINTED FINE SILVER
Standard on 300 Touring
(WF6)



19-INCH CAST ALUMINUM WHEEL, FULLY POLISHED
Standard on 300 Touring AWD
(WPY)



19-INCH CAST ALUMINUM WHEEL, FULLY PAINTED BLACK NOISE
Optional on 300 Touring AWD
Standard on 300 Touring L AWD
(WAK)

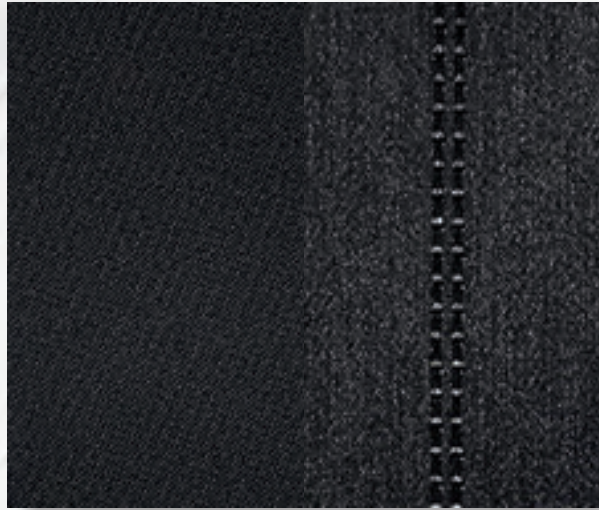


20-INCH CAST ALUMINUM WHEEL, FULLY PAINTED BLACK NOISE
Standard on 300S and 300 Touring L RWD
Optional on 300 Touring
(WHG)



20-INCH CAST ALUMINUM WHEEL, FULLY PAINTED LIGHTS OUT WITH BLACK VAPOR WHEEL CENTER CAP
Standard on 300C²⁵
(WHF)

INTERIOR COLORS



Black cloth with Black stitching —
Standard on 300 Touring



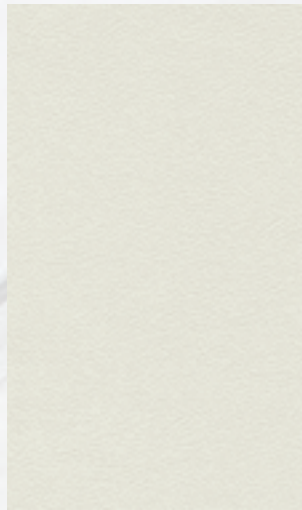
Linen cloth with Linen stitching —
Standard on 300 Touring



Black Nappa leather trim with Light Diesel stitching
and embroidered "S" logo —
Standard on 300S



Black Nappa leather trim with Axis II perforated
insert and Light Diesel stitching with
embroidered "S" logo —
Packaged with 300S Comfort Group



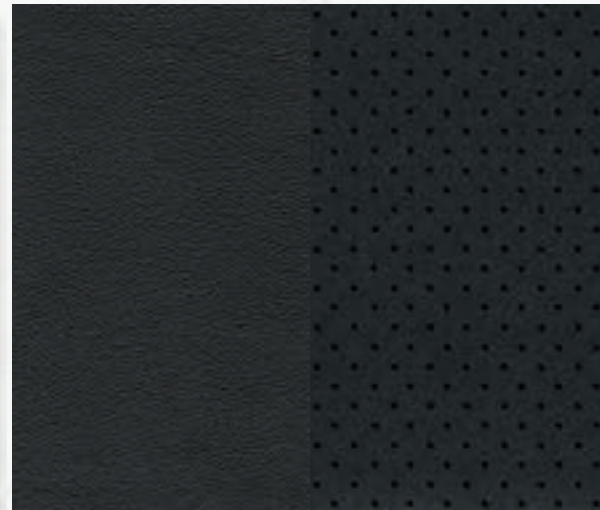
Linen Nappa leather trim
with Linen stitching —
Standard on 300 Touring L



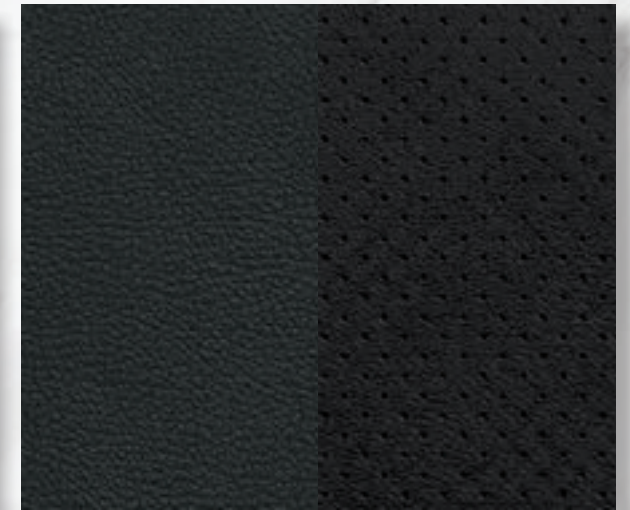
Linen Nappa leather trim with Axis II
perforated insert —
Packaged with 300 Touring L Comfort Group



Black Nappa leather trim
with Black stitching —
Standard on 300 Touring L



Black Nappa leather trim with Axis II
perforated insert —
Packaged with 300 Touring L Comfort Group



Premium 300C embossed Black Laguna leather trim
with Axis II perforated insert and Silver stitching —
Standard on 300C²⁵

CHRYSLER 300 SPECIFICATIONS

	300 TOURING	300 TOURING L	300S	300C
ENGINES AND TRANSMISSION				
3.6L Pentastar® V6 Variable Valve Timing (VVT) with 8-speed automatic transmission	S	S	S	–
5.7L HEMI® V8 VVT with Fuel Saver Technology and interactive Deceleration Fuel Shut-Off (iDFSO) with 8-speed automatic transmission	–	–	O	–
6.4L HEMI V8 with 8-speed automatic transmission	–	–	–	S
MECHANICAL FEATURES				
All-Wheel Drive (AWD) with Front-Axle Disconnect	O	O	–	–
Alternators – 160-amp	S	S	–	–
– 180-amp (included with SafetyTec™ Plus Group)	–	P	S	–
– 220-amp	–	–	–	S
Battery – 730-amp, maintenance-free	S	S	S	S
Brakes – Four-wheel disc antilock (includes All-Speed Traction Control)	S	S	S	–
– Performance – Vented front and solid rear discs (included with 5.7L HEMI V8 and AWD)	P	P	P	–
– Red Brembo® Performance four-piston calipers with vented front and rear discs	–	–	–	S
Exhaust System – Dual exhaust with bright tips	S	S	S	–
– Active exhaust system with dual Black tips	–	–	–	S
Differential – 3.09 limited-slip	–	–	–	S
Fuel-Filler System – Capless, with remote fuel-door release	S	S	S	S
Fuel Tank – 18.5-gallon	S	S	S	S
Remote Keyless Proximity Entry with Push-Button Ignition System	S	S	S	S
Speed Control	S	S	S	S
Sport Mode – Selectable Sport-tuned transmission shift points (includes steering wheel-mounted shift controls (paddle shifters))	–	–	S	S
Steering – Electric	S	S	S	–
– Performance-tuned	–	–	–	S
Suspension (four-wheel independent) – Touring-tuned	S	S	–	–
– Performance	–	–	S	–
– Sport-tuned (included on 300S with 5.7L HEMI V8)	–	–	P	–
– AWD (included with AWD)	P	P	–	–
– Adaptive Damping Suspension	–	–	–	S
Tip Start System	S	S	S	S
EXTERIOR FEATURES				
Badging – Chrome finish	S	–	–	–
– Black Noise Chrysler wing badge with Black accent (included with Sport Appearance Package)	P	S	–	–
– AWD	P	P	–	–
– Chrome Chrysler wing badge with Blue accent	S	–	–	–
– Black Noise Chrysler wing badge with Red insert	–	–	S	–
– Tricolor 300C grille badge	–	–	–	S
– Black Chrome 300C decklid badge	–	–	–	S
Cladding – Lower bodyside	S	S	S	S

S = Standard O = Optional P = Available within Package – = Not Available

	300 TOURING	300 TOURING L	300S	300C
EXTERIOR FEATURES (continued)				
Door Handles – Body-color	S	S	S	S
Glass – Acoustic windshield and front doors; Solar-Control front and rear windows	S	S	S	S
Grille – Black with bright surround	S	–	–	–
– Black with Black Chrome surround (included with Sport Appearance Package)	P	S	S	–
– Black Chrome surround	–	–	–	S
Headlamps – Adaptive Bi-xenon High Intensity Discharge (HID) with delay and automatic leveling system (included with Comfort Group)	–	P	P	S
– Bifunctional halogen projector with delay (not available with adaptive Bi-xenon HID)	S	S	S	–
– LED daytime running headlamps	S	S	S	S
– Auto High-Beam Headlamp Control (included with SafetyTec Plus Group and Driver Convenience Group)	–	P	P	P
– Automatic	S	S	S	S
– Black headlamp bezels (included with Sport Appearance Package)	P	S	S	S
– Chrome headlamp bezels	S	–	–	–
LED Fog Lamps	–	–	S	–
Mirrors – Body-color	S	S	S	S
– Auto-adjust-in-Reverse (included with Comfort Group)	–	P	P	S
– Blind Spot Monitoring ¹⁵ and Rear Cross-Path Detection ¹⁴	–	S	S	S
– Courtesy lamp	–	S	S	S
– e-Chromic auto-dimming (driver's side only)	–	S	S	S
– Memory (driver's seat, power tilt/telescoping steering column (when equipped), exterior mirrors and radio; included with Comfort Group)	–	P	P	S
– Power adjust/manual foldaway, heated	S	S	S	S
– Supplemental turn signal	–	S	S	S
Premium Fog Lamps (included with S Model Appearance Package on 300S)	–	S	P	S
Spoiler – Rear Body-color	–	–	–	S
Tires – P215/65R17 low-rolling-resistance	S	–	–	–
– 235/55R19 BSW All-Season (included with AWD)	S	S	–	–
– 235/55R19 BSW All-Season Performance (optional with AWD)	O	O	–	–
– 245/45R20 BSW All-Season Performance (included with 20-inch wheels)	P	S	S	–
– 245/45ZR20 BSW All-Season Performance	–	–	–	S
– Compact spare	S	S	S	S
Wheels – 17-inch Fine Silver (included with Rear-Wheel Drive (RWD)) (WF6)	S	–	–	–
– 19-inch polished aluminum (included with AWD) (WPY)	S	–	–	–
– 19-inch Black Noise (included with Sport Appearance Package on AWD) (WAK)	P	S	–	–
– 20-inch Black Noise (included with Sport Appearance Package on Front-Wheel Drive (FWD)) (WHG)	P	S	S	–
– 20-inch forged Lights Out-painted cast aluminum (WFG)	–	–	–	S
Wipers – Two-speed variable/intermittent	S	S	S	S
– Rain-sensing (included with SafetyTec Plus Group and Driver Convenience Group)	–	P	P	S

CHRYSLER 300 SPECIFICATIONS (continued)

	300 TOURING	300 TOURING L	300S	300C
INTERIOR FEATURES				
Air Conditioning — Dual-Zone Automatic Temperature Control (ATC) with humidity sensor	S	S	S	S
Chrysler Air Filtration System	S	S	S	S
Cup Holder — Front, heated and cooled	—	—	—	S
Defroster — Rear-window	S	S	S	S
Door Locks — Power, speed-sensitive; rear child-protection	S	S	S	S
Floor Mats — Front and rear	S	S	S	—
— Luxury front and rear	—	—	—	S
Interior Accents — Charcoal wood hydrographic	S	S	—	—
— Black Olive Ash Burl	—	P	—	—
— Piano Black/Satin Chrome	—	—	S	—
— Piano Black bezels	—	—	S	—
— Satin Chrome bezels	S	S	—	—
— Carbon Fiber and Piano Black	—	—	—	S
Lighting — Glove box, trunk, front reading and map lamps, rear reading and courtesy lamps	S	S	S	S
— LED driver's and front-passenger lower front footwell lamps (included with Comfort Group)	—	P	P	S
— LED-illuminated front and rear map pockets (included with Comfort Group)	—	P	P	S
— LED-illuminated front cup holders	S	S	S	S
— LED-illuminated rear cup holders (included with Comfort Group)	—	P	P	S
Memory System — Memory settings for two drivers for the driver's seat, power tilt/telescoping steering column (when equipped), exterior mirrors and radio (included with Comfort Group)	—	P	P	S
Mirrors — Rearview, auto-dimming	S	S	S	S
— Visor vanity, illuminated, driver's- and passenger-side	S	S	S	S
Passenger Assist Handles — Front, with illuminated rear assist handles	S	S	S	S
Pedals — Bright, power-adjustable with memory	—	—	—	S
Power Accessory — 12-volt power outlets in center, front instrument panel, center console and back of center console, with delay feature	S	S	S	S
Power Backlight Sunshade (included with Comfort Group)	—	P	P	—
Seats — Eight-way power driver's seat with four-way power lumbar adjust	S	—	—	—
— Eight-way power driver's and front-passenger seats with four-way power lumbar adjust	—	S	S	S
— Heated front (included with leather-trimmed bucket seats; not included with cloth seats)	—	S	S	S
— Heated second-row (included with Comfort Group)	—	P	P	S
— Cloth bucket (*A8)	S	—	—	—
— Nappa leather-trimmed bucket (*E6)	—	S	—	—
— Nappa leather-trimmed Sport bucket (*G7)	—	—	S	—
— Nappa leather-trimmed Sport bucket with perforated inserts and accent stitching (included with Comfort Group) (*LL)	—	—	P	—
— Nappa perforated leather-trimmed bucket (included with Comfort Group) (*AL)	—	P	—	—
— Laguna leather-trimmed Premium Sport bucket with perforated inserts, Silver accent stitching and embossed 300C logo (*FL)	—	—	—	S
— Rear 60/40 split-folding rear bench	S	S	S	—

S = Standard O = Optional P = Available within Package — = Not Available

INTERIOR FEATURES (continued)

	300 TOURING	300 TOURING L	300S	300C
Seats (continued) — Rear 60/40 split-folding rear bench with armrest, lit cup holders and storage (included with Comfort Group)	—	P	P	S
— Ventilated front (included with Comfort Group)	—	P	P	S
Shift Knob — Rotary	S	S	S	S
Speedometer — 140-mph	S	S	S	—
— 160-mph (included with 5.7L and 6.4L HEMI® V8 engines)	—	—	P	S
Steering Column — Manual tilt/telescoping	S	S	S	—
— Power tilt/telescoping with memory (included with Comfort Group)	—	P	P	S
Steering Wheel — Premium-wrapped	S	S	S	—
— Leather-wrapped	—	—	—	S
— Heated (included with Comfort Group)	—	P	P	S
— Steering wheel-mounted audio controls	S	S	S	S
— Steering wheel-mounted shift controls (paddle shifters)	—	—	S	S
Sunroof — Dual-pane panoramic full-power front and fixed rear, with one-touch open/close feature (included with Popular Equipment Group)	—	P	S	S
Temperature Display — Outside reading, with compass	S	S	S	S
UCONNECT® MULTIMEDIA				
Audio Systems — Six speakers	S	S	—	—
— Six Premium Alpine® speakers with 276-watt digital amplifier (included with SafetyTec™ Plus Group and Comfort Group)	—	P	—	—
— Nine Premium Alpine speakers with trunk-mounted subwoofer, 506-watt amplifier and Surround Sound system (included with Popular Equipment Group)	—	P	S	—
— 19-speaker Premium Harman Kardon® GreenEdge™ Audio System with 900-watt amplifier and Surround Sound	—	—	—	S
Uconnect 4C with 8.4-inch Touchscreen Display — AM/FM/HD radio system with Apple CarPlay ⁹ and Android Auto ¹⁰ ; SiriusXM® Radio six-month trial services ¹¹ ; Integrated Voice Command with streaming audio; 8.4-inch touchscreen for displaying music, climate controls and vehicle information; and Media Hub with audio jack and two USB ports ²²	S	S	—	—
Uconnect 4C NAV with 8.4-inch Touchscreen Display and Navigation — AM/FM/HD radio system with Apple CarPlay ⁹ and Android Auto ¹⁰ ; SiriusXM Radio six-month trial services ¹¹ ; five-year trial services of SiriusXM Travel Link ²⁶ and SiriusXM Traffic Plus ²⁶ ; Integrated Voice Command with streaming audio; 8.4-inch touchscreen for displaying music, climate controls and vehicle information; and Media Hub with audio jack and two USB ports ²² (included with Popular Equipment Group)	—	P	S	S
SiriusXM Guardian™ ¹⁹ One-Year Trial Services	S	S	S	S
SAFETY & SECURITY				
Active Front Head Restraints ²⁷	S	S	S	S
Adaptive Cruise Control with Stop ¹² (included with SafetyTec Plus Group and Driver Convenience Group)	—	P	P	S
Air Bags ¹⁶ — Advanced multistage driver's and front-passenger	S	S	S	S
— Driver's-side inflatable knee bolster	S	S	S	S
— Supplemental side-curtain for front and rear outboard occupants	S	S	S	S
— Supplemental front-seat side	S	S	S	S
Child Seat Anchor System (LATCH) — Three mounts for child seats in the second row help ease the installation of compatible aftermarket child seats	S	S	S	S
Electronic Stability Control (ESC) ⁶ — Includes Rain Brake Support, Electronic Roll Mitigation, Trailer Sway Damping ²⁸ Ready Alert Braking, Hill Start Assist and All-Speed Traction Control	S	S	S	—

CHRYSLER 300 SPECIFICATIONS (continued)

	300 TOURING	300 TOURING L	300S	300C
SAFETY & SECURITY (continued)				
Front-Passenger Seat Belt Alert	S	S	S	S
Full-Speed Forward Collision Warning (FCW) with Active Braking ³ (included with SafetyTec™ Plus Group and Driver Convenience Group)	—	P	P	S
ParkSense® Front and Rear Park Assist System ¹⁵	—	S	S	S
ParkView® Rear Back-Up Camera ¹⁴	S	S	S	S
Remote Start System ⁷	—	S	S	S
SafetyTec Plus Group — Includes 180-amp alternator on Touring L model, Advanced Brake Assist ³ , rain-sensing windshield wipers, LaneSense® Lane Departure Warning (LDW) with Lane Keep Assist ⁴ , Auto High-Beam Headlamp Control, Full-Speed FCW with Active Braking ³ , Adaptive Cruise Control (ACC) with Stop ¹² and six Premium Alpine® speakers on Touring L model	—	O	O	—
Security Alarm ²³	S	S	S	—
— Deluxe Security Alarm ²³ (included with Comfort Group)	—	P	P	S
Sentry Key® Theft Deterrent System — Antitheft engine immobilizer	S	S	S	S
Three-Mode Electronic Stability Control (ESC) ⁶ — Includes Advanced Rain Brake Support, Electronic Roll Mitigation, Ready Alert Braking, Hill Start Assist and All-Speed Traction Control	—	—	—	S
Tire Pressure Monitoring Display — Located in the 7-inch reconfigurable Driver Information Display	S	S	S	S
PACKAGES/EQUIPMENT GROUPS				
Popular Equipment Group — Includes dual-pane panoramic sunroof; Uconnect® 4C NAV with 8.4-inch touchscreen display and navigation with five-year trial services of SiriusXM® Travel Link ²⁶ and SiriusXM Traffic Plus ²⁶ ; and nine Premium Alpine speakers with trunk-mounted subwoofer, 506-watt amplifier and Surround Sound system	—	O	—	—
Driver Convenience Group — Includes Advanced Brake Assist ³ , rain-sensing windshield wipers, LaneSense LDW with Lane Keep Assist ⁴ , Auto High-Beam Headlamp Control, Full-Speed FCW with Active Braking ³ and ACC with Stop ¹²	—	—	—	O
Comfort Group — Includes Deluxe Security Alarm ²³ , trunk mat, auto-adjust-in-Reverse driver's mirrors, ventilated leather-trimmed seats, adaptive Bi-xenon High Intensity Discharge (HID) headlamps with automatic leveling system, door sill scuff pads, driver's and front-passenger footwell LED lamps, front and rear LED-illuminated map pockets, heated second-row seats, heated steering wheel, power backlight sunshade, power tilt/telescoping steering column, memory on driver's seat, power tilt/telescoping steering column, exterior mirrors and radio, six Premium Alpine speakers on Touring L and rear-storage armrest with LED-illuminated cup holders	—	O	O	—
Sport Appearance Package — Includes Black Noise wing badge with Black insert, Gloss Black front fascia appliqué, Black LED taillamps, Black headlamp bezels, Gloss Black daylight opening (DLO) moldings, Black with Black Chrome surround grille, 20-inch Black Noise aluminum wheels on Rear-Wheel Drive (RWD) and 19-inch Black Noise aluminum wheels on All-Wheel Drive (AWD)	O	—	—	—
S Model Appearance Package — Includes premium fog lamps, Body-color performance front fascia, rear Body-color spoiler and Gloss Black fascia appliqué (included with 5.7L HEMI® V8 on 300S)	—	—	P	—
Mopar® Interior Appearance Group — Includes Mopar Premium Carpet Floor Mats with Logo, Premium Black Carpet Cargo Mat, Mopar Bright Door Sill Guards and Mopar Bright Pedal Kit (not available with Popular Equipment Group or trunk-mounted subwoofer)	O	O	—	—

S = Standard O = Optional P = Available within Package — = Not Available

CHRYSLER 300 DIMENSIONS (inches)





The Chrysler Collection

Discover the ingenious Chrysler Brand spirit at collection.chrysler.com. From technical apparel to artful house goods, you can take your proud-owner status to a whole new level.



Chrysler Amazon Store

Browse an ever-changing collection of unique Chrysler Brand merchandise with your favorite shopping experience at amazon.com, including items eligible for Amazon Prime. Style awaits at amazon.com/chryslerstore

available at
amazon



AUTHENTIC CHRYSLER ACCESSORIES

The Chrysler 300 personifies elegant and sophisticated design. A wide range of Authentic Mopar® Accessories — explicitly crafted for the versatility of this commanding full-size sedan — lets you take your lifestyle further. From performance and styling enhancements to premium protection parts, Mopar helps you customize the distinctive character of your 300. Visit mopar.com or your local Chrysler Brand dealership to see the full line of Mopar Authentic Accessories.

DISCOVER
MORE AT
[MOPAR.COM](https://mopar.com)

OUTFITTED FOR ADVENTURE

Featured Mopar Accessories: 20-inch 5-Spoke Black Chrome R/T Wheels and Matte Black Pinstripe Graphic

MOPAR OWNER'S SITE AND CHRYSLER BRAND APP

Get all the resources you need to make owning your Chrysler Brand vehicle the best experience possible. Schedule service directly with your preferred dealer, create a custom online dashboard tailored to you and your vehicle, and access personalized resources, including your own Owner's Manual, Vehicle Health Report, special offers and more — anytime, anywhere. Register your vehicle at mopar.com or download the Chrysler Brand App from the App Store or Google Play today.

MOPAR VEHICLE PROTECTION PLANS

A full portfolio of vehicle protection plans designed to meet the needs of your unique ownership experience is available and honored at all FCA US LLC dealerships. We stand behind every extended protection plan with certified, factory-trained technicians and the use of original equipment parts. Ask for a Mopar Vehicle Protection Plan at your dealership or visit mopar.com

CHRYSLER



GO TO CATALOG DISCLAIMERS



CHRYSLER DRIVEPLUSSM MASTERCARD[®]

Apply today for a Chrysler DrivePlus Mastercard and, upon approval, start earning 5% cash back on Chrysler dealership purchases, 2% cash back on gas and travel purchases, and 1% cash back on purchases everywhere else.²⁹ Redeem your rewards toward your next service or your next Chrysler purchase. Visit drivepluscard.com or visit a participating dealer to learn more.

WARRANTIES

Chrysler Brand vehicles are covered by an FCA US LLC 3-Year or 36,000-Mile Basic Limited Warranty³⁰ (excludes normal maintenance and wear items) as well as a 5-Year or 60,000-Mile Powertrain Limited Warranty³¹ that is fully transferable and includes Roadside Assistance Services: Flat Tire, Lockout, Towing, Out of Gas/Fuel Delivery and Battery Jump Assistance. Ask your dealer for details and a copy of these limited warranties.

DRIVEABILITY PROGRAM

The FCA US LLC DriveAbility Program provides aftermarket reimbursement incentives on adaptive vehicle upfit equipment in order to help provide safe and reliable vehicle modifications to enhance accessibility for all people. For more information, call (800) 255-9877 or visit fcausdriveability.com

JOIN IN

Join fellow enthusiasts and tell your story by posting comments, participating in discussions, and sharing your Chrysler Brand vehicle photos and videos. Join our community on Facebook (facebook.com/Chrysler), follow us on Twitter (twitter.com/Chrysler) and YouTube (youtube.com/Chrysler), and check us out on Instagram (instagram.com/Chrysler). Thank you for following.



(1) The Uconnect Phone requires a mobile phone equipped with a Hands-Free Profile. To check phone compatibility, please visit www.UconnectPhone.com. (2) Based on manufacturer's-projected 19 city/23 combined/30 hwy mpg 3.6L RWD V6 and 18 city/21 combined/27 hwy mpg 3.6L AWD V6. Actual mileage may vary. (3) This system is an alert system for the front of the vehicle. It is not a substitute for active driver involvement. The driver must remain aware of traffic conditions and be prepared to use the brakes to avoid collisions. (4) This system is a driver convenience system, not a substitute for active driver involvement. The driver must remain aware of traffic conditions and maintain control of the vehicle. (5) Competitor information based upon current available manufacturer specifications and the FCA US LLC Upper Large Car Segmentation. (6) Always drive carefully, consistent with conditions. Always wear your seat belt and obey traffic laws. (7) Check state and local laws regarding the use of remote start systems. (8) Competitor information based upon current available manufacturer specifications and upon third-party measurement data regarding total screen area for the FCA US LLC Upper Large Car Segmentation. (9) Requires compatible iPhone. See dealer for phone compatibility. Data plan rates apply. Vehicle user interface is a product of Apple. Apple CarPlay is a trademark of Apple Inc. iPhone is a trademark of Apple Inc., registered in the US and other countries. Apple terms of use and privacy statements apply. (10) To use Android Auto on your car display, you'll need an Android phone running Android 8 or higher, an active data plan and the Android Auto App. (11) Your service will automatically stop at the end of your trial subscription unless you decide to continue service. If you do not wish to enjoy your trial subscription, you can cancel it by calling the number below. **If you decide to continue service after your trial period included with the new vehicle purchase, the subscription plan you choose will automatically renew thereafter and you will be charged according to your chosen payment method at then-current rates.** Trial service is not transferable. Fees and taxes apply. Please see the Customer Agreement at www.siriusxm.com for complete terms and how to cancel, which includes calling SiriusXM at 1-888-539-7474. All fees and programming are subject to change. Not all vehicles or devices are capable of receiving all services offered by SiriusXM. Data displays and individual product availability vary by vehicle hardware. (12) This system is a driver convenience system, not a substitute for active driver involvement. The driver must remain aware of traffic conditions and be prepared to use the brakes to avoid collisions. (13) Always check visually for vehicles prior to changing lanes. (14) Always check entire surroundings visually before proceeding. (15) Always look before proceeding. An electronic drive aid is not a substitute for conscientious driving. Always be aware of your surroundings. (16) Always sit properly in designated seating positions with seat belts securely fastened at all times. (17) Three-month / 1GB trial included with the purchase or lease of a new vehicle. Upon expiration of the trial period, purchase of a subscription is required. Wi-Fi Hotspot available through third-party subscription. Requires Internet-enabled mobile device. See dealer for details. This feature is not intended for use by the driver while the vehicle is in motion. Always drive carefully. (18) Roadside Assistance Call connects you with an agent who will provide Roadside Assistance Service. Vehicle must be within the United States, Puerto Rico or Canada and have network coverage. Additional roadside assistance charges may apply. Check warranty for details. (19) All SiriusXM Guardian equipped vehicles come with a 12-month complimentary trial effective on the date of purchase or lease of a new vehicle. Enrollment in the trial is required to receive service. Upon expiration of the trial period, purchase of a subscription is required to continue SiriusXM Guardian. SiriusXM Guardian is available only on equipped vehicles purchased within the United States and Puerto Rico. Services can only be used where cellular coverage is available. See Uconnect and SiriusXM Guardian Terms of Service for complete service limitations. (20) Remote Vehicle Start not available on all vehicles. You are responsible for using remote features in accordance with any laws, rules or ordinances in effect in your vehicle's location. You must have an active subscription to SiriusXM Guardian in order to use remote services. See Terms of Service for service limitations. (21) Compatible with properly equipped Uconnect systems on eligible vehicles. Requires registration of vehicle to SiriusXM Guardian connected services and fulfillment of minimum subscription requirements. Amazon, Alexa, and all related logos and marks are trademarks of Amazon.com, Inc. or its affiliates. (22) For supported file formats, refer to the USB Port section of the Owner's Manual or DVD. (23) Vehicle must be locked and system activated for alarm to sound. (24) Not compatible with all garage doors. (25) Late and/or limited availability. (26) Not all vehicles or devices are capable of receiving all services offered by SiriusXM. Data displays and individual product availability vary by vehicle hardware. Current information and features may not be available in all locations, or on all receivers. Weather Forecast, Current Conditions may not be available in all locations. (27) Always sit properly with the head restraint properly adjusted. Never place anything in front of the head restraint. (28) Always drive carefully, consistent with conditions. (29) See the Reward Terms and Conditions in the Summary of Credit Terms provided at time of application for details, including earning, redemption, expiration or forfeiture. Percentage back is earned as points. (30) Visit www.Mopar.com for complete details and a copy of the Basic Limited Warranty. (31) Visit www.Mopar.com for complete details and a copy of the Powertrain Limited Warranty.

©2022 FCA US LLC. All Rights Reserved. Chrysler, Mopar, Chrysler 300, 300C, 300S, the Chrysler wing design, HEMI, LaneSense, Mopar Vehicle Protection, ParkSense, ParkView, Pentastar, Sentry Key and Uconnect are registered trademarks, and DriveAbility and DriveAbility design and SafetyTec are trademarks of FCA US LLC.

Alpine and the Alpine logo are registered trademarks of Alpine Electronics, Inc. All rights reserved. Amazon, Alexa, and all related logos and marks are trademarks of Amazon.com, Inc. or its affiliates. Apple, Apple Music, App Store, iPhone, iTunes and Siri are registered trademarks, and Apple CarPlay is a trademark of Apple Inc. Brembo is a registered trademark of Brembo SpA. Facebook and logo are registered trademarks of Meta Platforms, Inc. Google, Android, YouTube and Android Auto are trademarks of Google LLC. Harman Kardon is a registered trademark and GreenEdge is a trademark of Harman International Industries, Inc. Instagram is a registered trademark of Instagram, Inc. Cards are issued by First National Bank of Omaha (FNBO[®]), pursuant to a license from Mastercard International Incorporated. Mastercard is a registered trademark, and the circles design is a trademark of Mastercard International Incorporated. SiriusXM Connected Vehicles Services Inc., Sirius, XM, SiriusXM, SiriusXM Guardian, and all related marks and logos are registered trademarks of SiriusXM Radio Inc. The Twitter name, logo, Twitter T, Tweet and Twitter bird are service marks of Twitter, Inc. in the United States and other countries.

This catalog is a publication of FCA US LLC. All product illustrations and specifications are based upon current information at the time of publication approval. FCA US LLC reserves the right to make changes from time to time, without notice or obligation, in prices, specifications, colors and materials, and to change or discontinue models, which are considered necessary to the purpose of product improvement or for reasons of design and/or marketing.

